

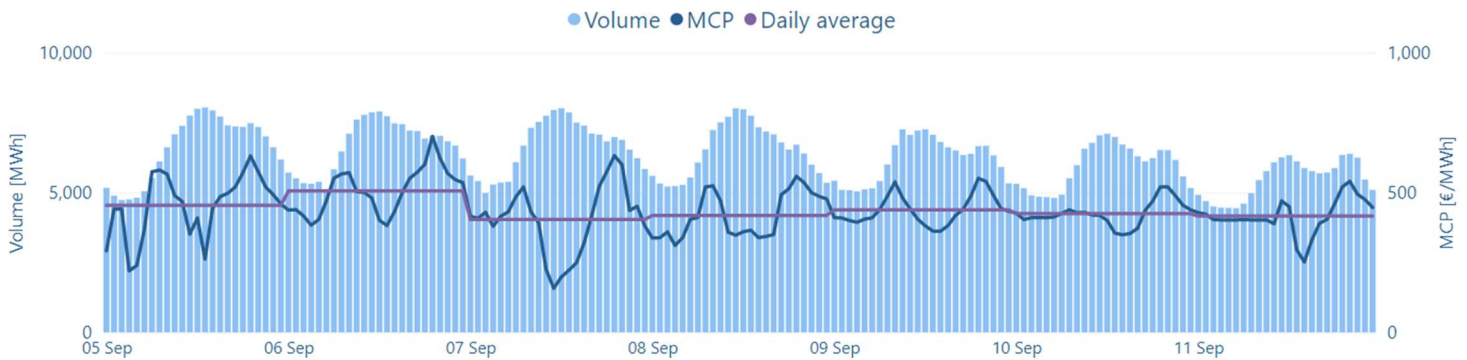
MCP
437.20 €/MWh

St. Deviation
89.79

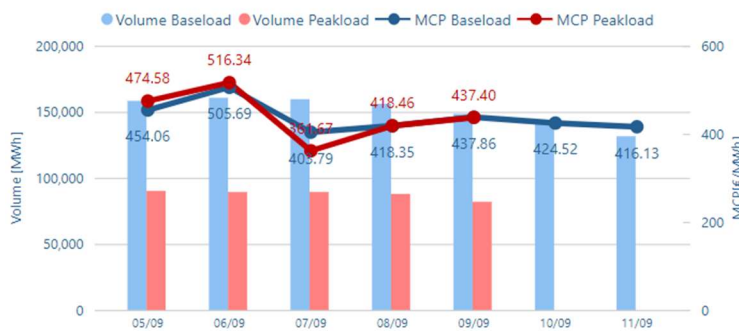
Volume
1,057 GWh

Value
463.9 M€

Hourly MCP & Volume



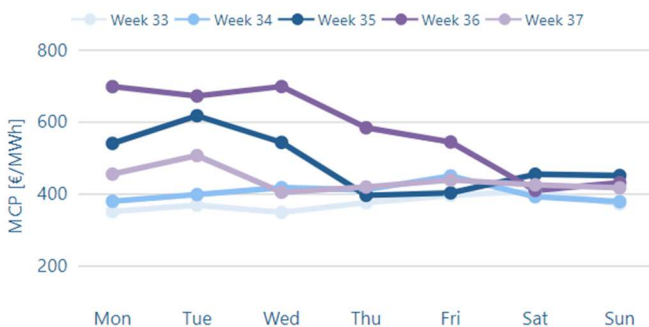
Daily MCP & Volume



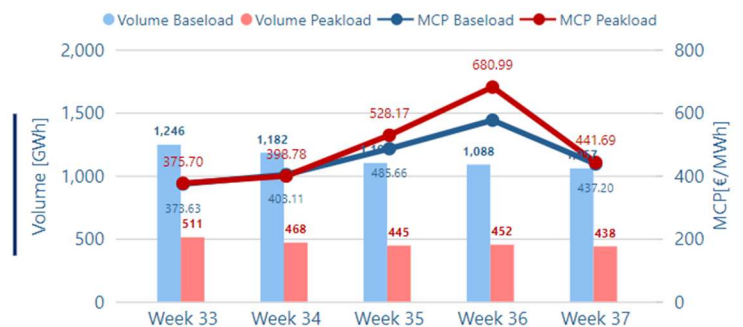
Data table

Delivery Date	MCP BL [€/MWh]	MCP PL [€/MWh]	Volume BL [MWh]	Volume PL [MWh]
05/09	454.06	474.58	158,348	90,139
06/09	505.69	516.34	160,707	89,285
07/09	403.79	361.67	159,609	89,322
08/09	418.35	418.46	156,082	87,838
09/09	437.86	437.4	148,453	81,886
10/09	424.52		142,642	
11/09	416.13		131,516	

MCP per Weekday



Weekly MCP & Volume



Day Ahead Electricity Market-Greek Bidding Zone

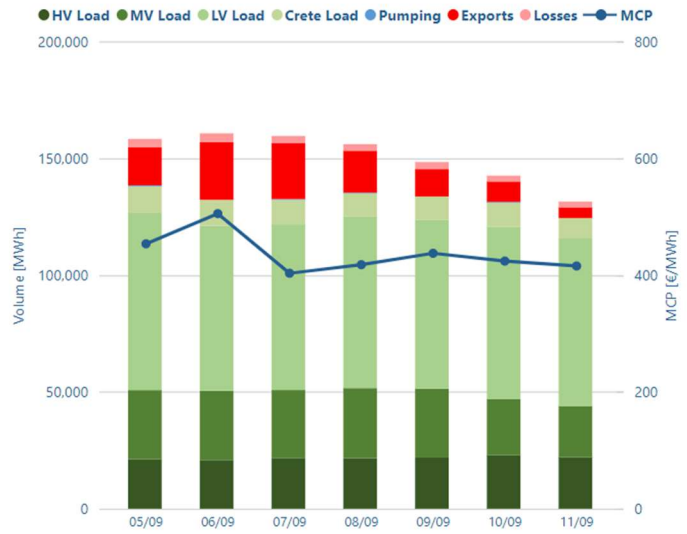
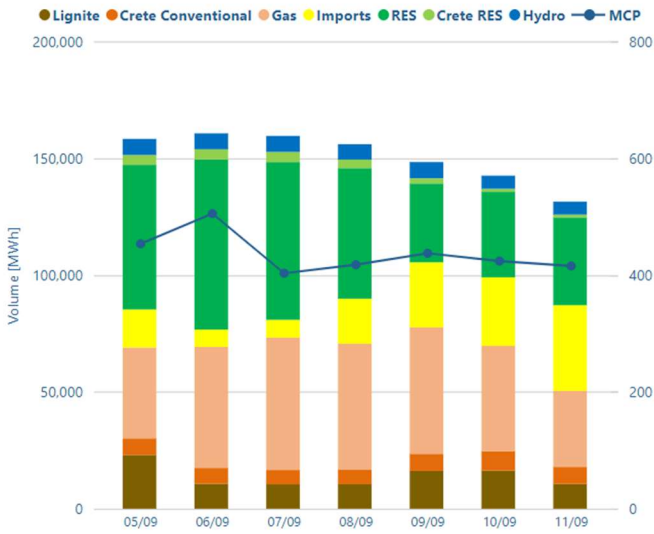
Week 37

05/09/2022

11/09/2022

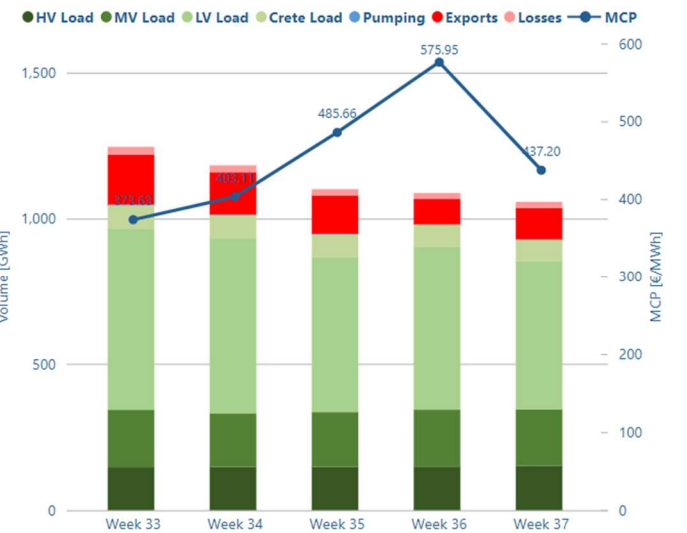
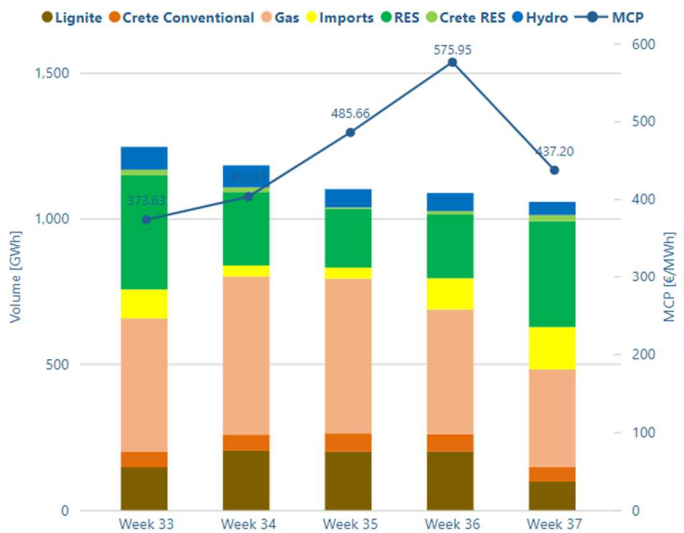
Daily Supply Mix

Daily Demand Mix



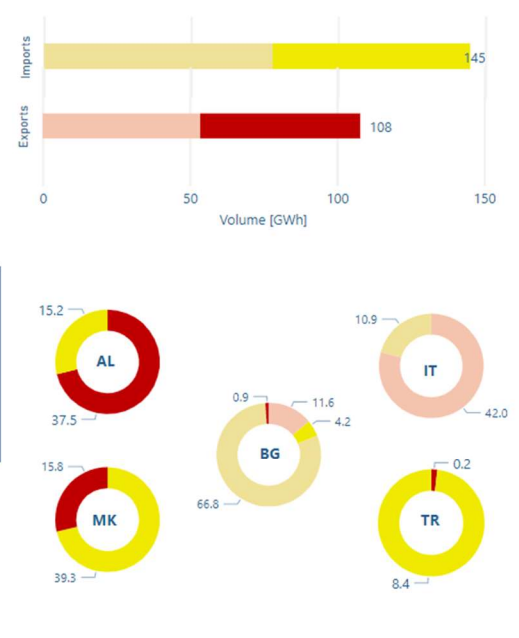
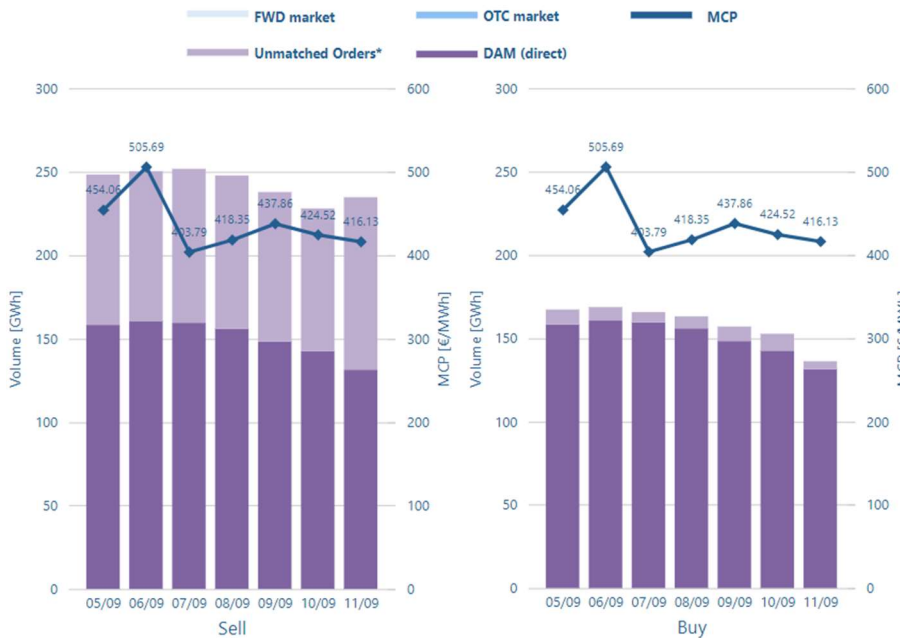
Weekly Supply Mix

Weekly Demand Mix



Unmatched orders & traded volume

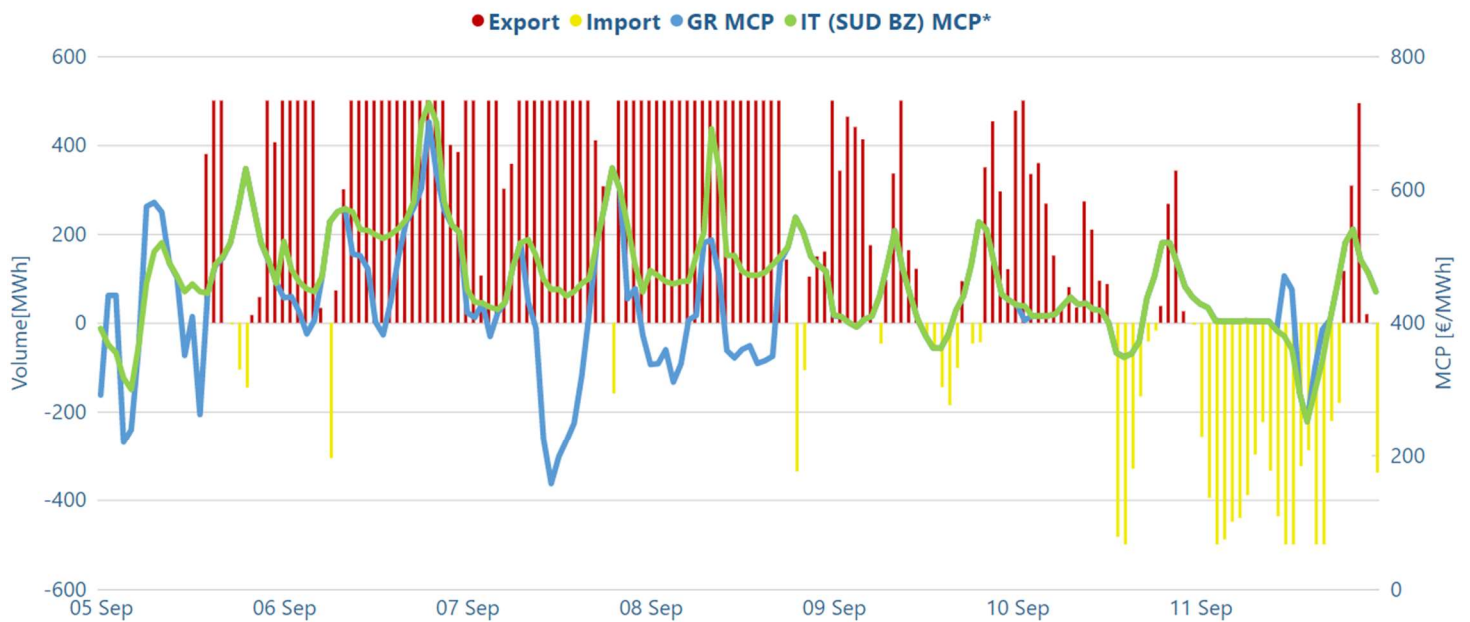
Cross Borders Volumes



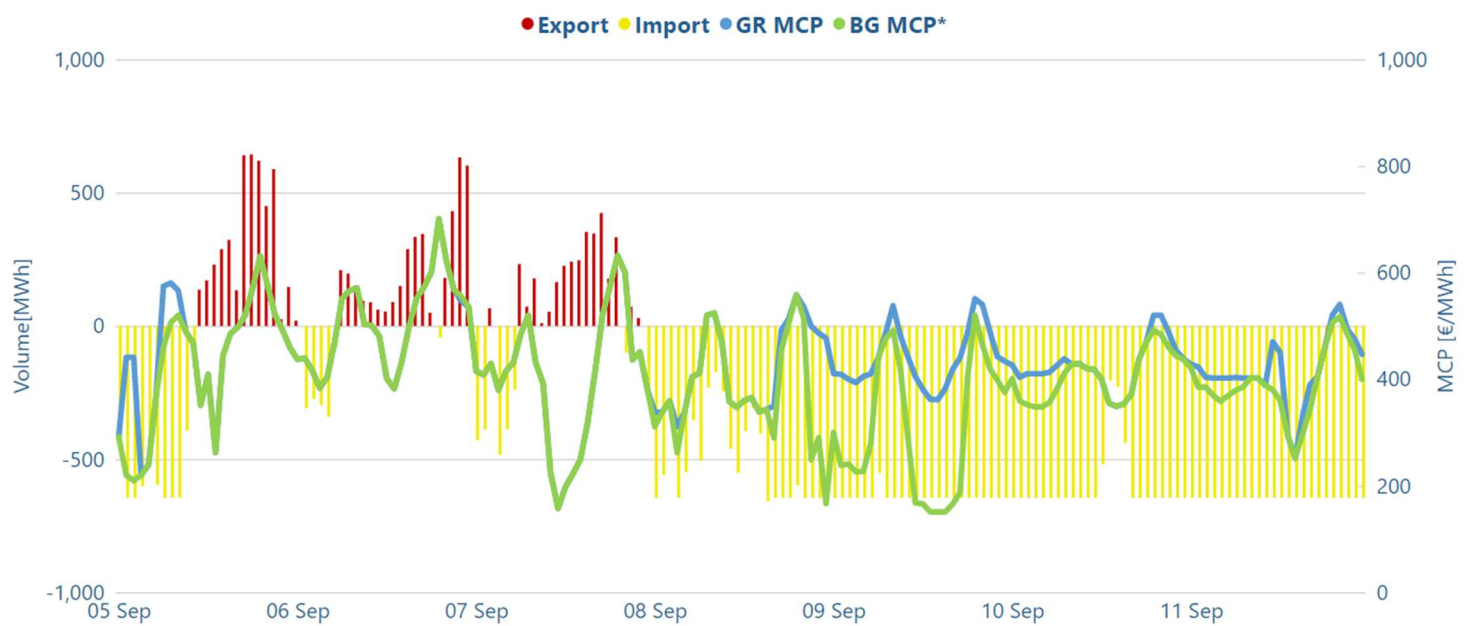
*The unmatched orders include all orders that have not been included in the algorithm (excluding block orders for sell side)

Exports-Implicit Allocation Imports-Implicit Allocation

Market Coupling Cross Border Flow



*Datasource for IT (SUD BZ) MCP: <http://www.mercatoelettrico.org/En/Esiti/MGP/EsitiMGP.aspx>



*Datasource for BG MCP: <https://ibex.bg/markets/dam/dam-market-segment/>

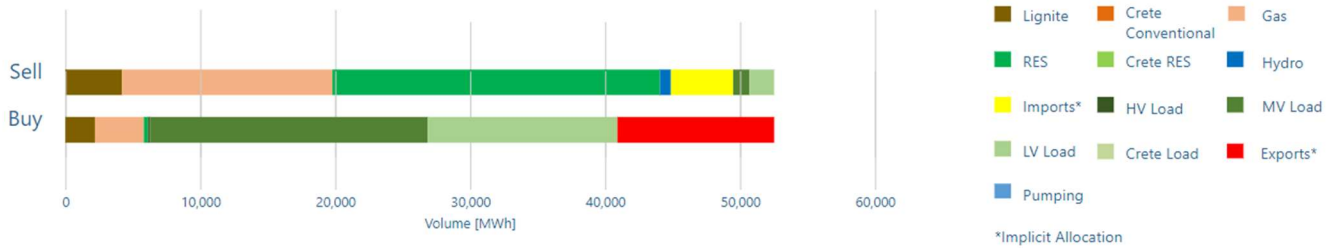
Intraday Electricity Market-Greek Bidding Zone

Week 37

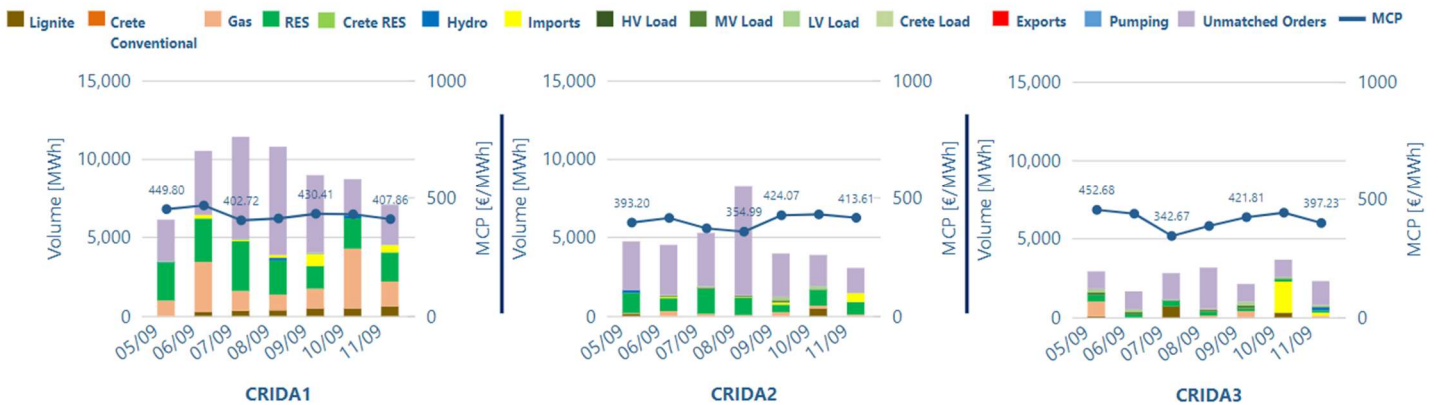
05/09/2022

11/09/2022

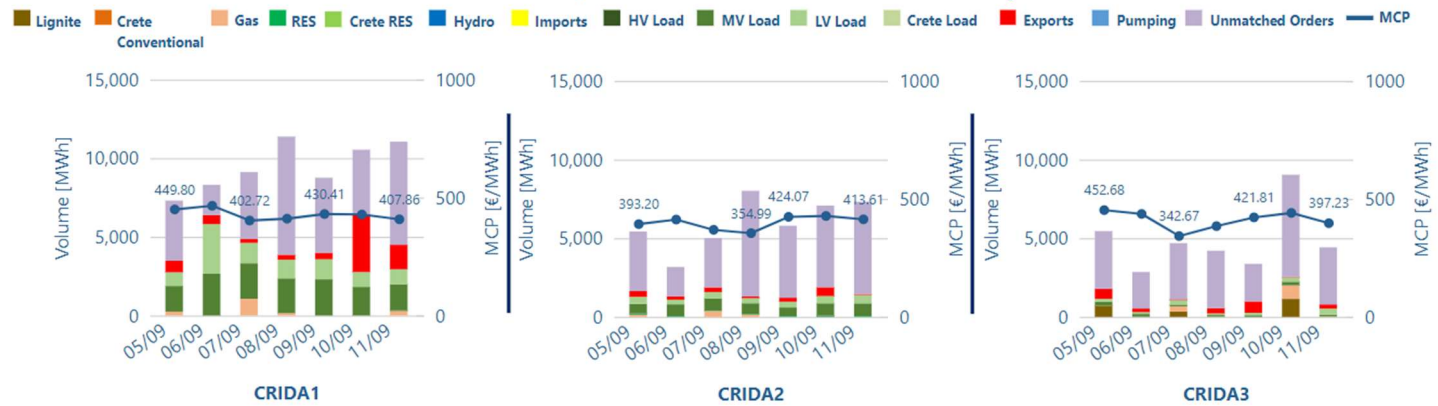
Aggregated traded volume



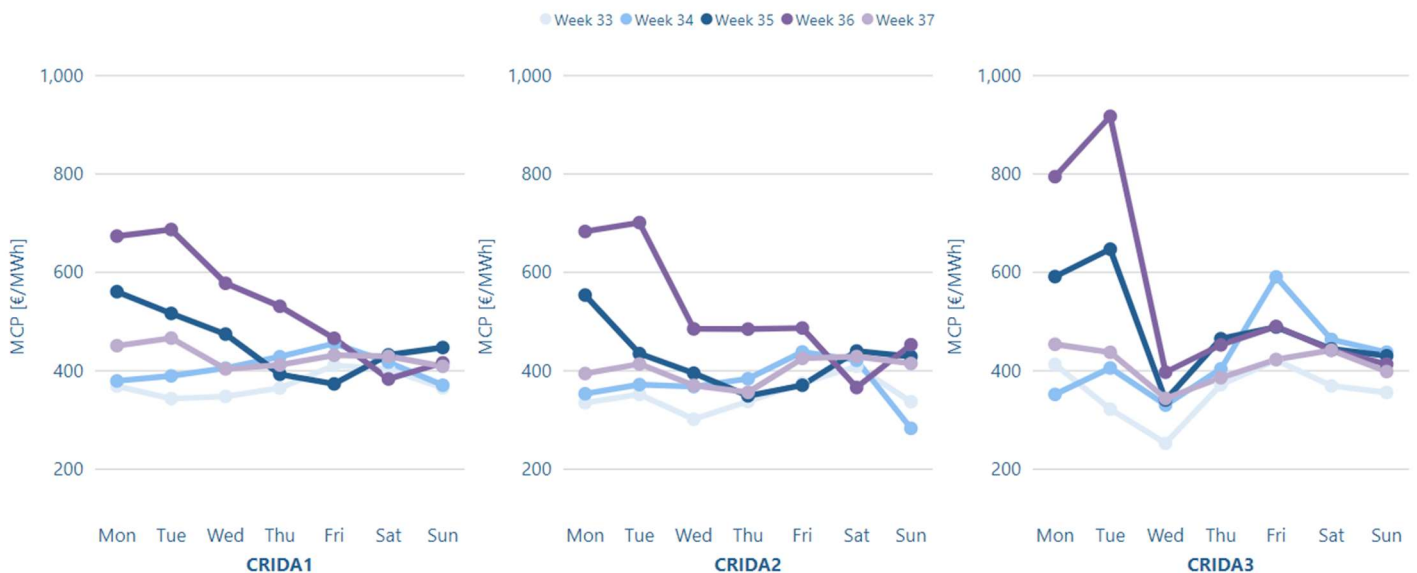
MCP, Volume & unmatched orders for Sell Side

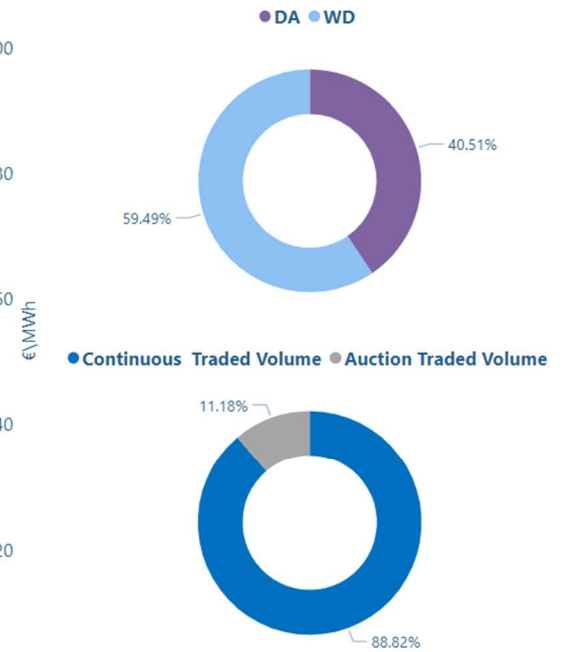
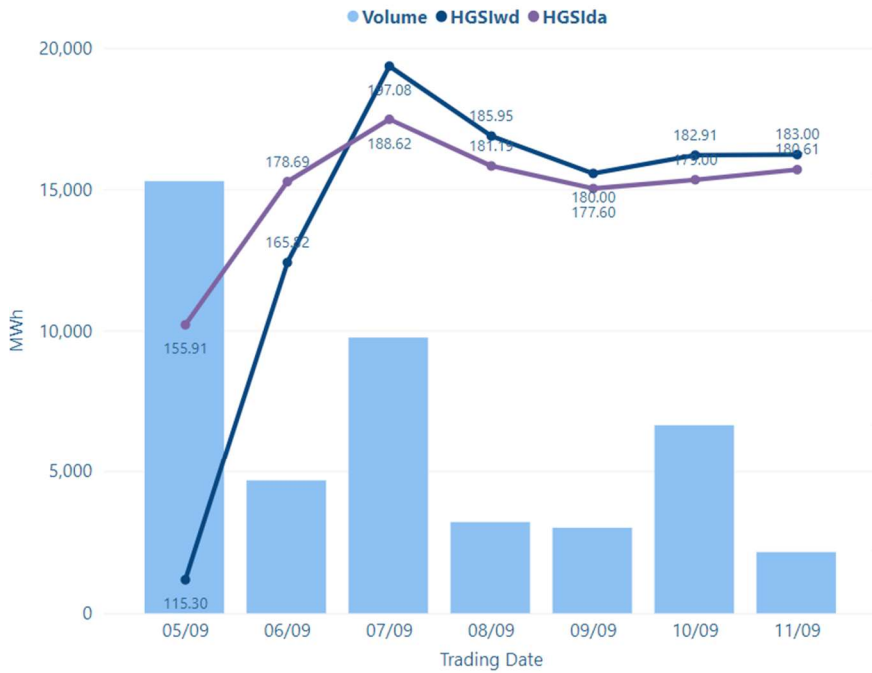


MCP, Volume & unmatched orders for Buy Side



MCP per Weekday





Volume, Closing, Min & Max Prices per Trading Date

